

BILL OF MATERIAL

FOR: REFORMER TUBE-ACCESSORIES

DWG: F2-105

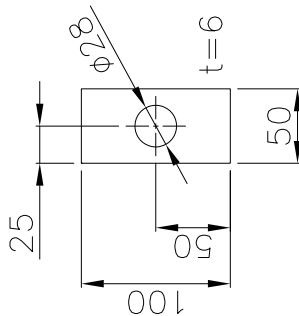
ITEM	QTY	DESCRIPTION	WEIGHT (kg)		MAT'L	REMARKS
			UNIT	TOTAL		
DETAIL F2-105--A						
1	2	COMPRESSION SPRING, 10mm ϕ WIRE x 81 O.D., 315 FREE HEIGHT, K=22.6 N/mm	1.81	3.62	50C14/18159	EIBACH or Eq.
TOTAL APPROX. NET WEIGHT			3.62		ONE ASSY.	

DETAIL F2-105-B

2	2	PIPE 1 1/4", Sch. STD, L=825	2.8	5.6	A=53 Type S	ASME B36.10M
3	2	FULL THREADED ROD 1"-8UNC, L=1000	4	8	A=133 GRB7	ASME B18.3.1.3
4	8	HEAVY HEX. NUT 1"- 8 UNC	-	1	A=134 GR2	ASME B18.2.2
5	2	PIPE 3", Sch. 10, L=300	2	4	A=33 Type S	ASME B36.10M
6	4	PL 6 x 82 OD x 44 ID	0.2	0.8	St 37-2	-
7	2	PL 6 x 100 x 50	0.2	0.4	St 37-2	-
TOTAL APPROX. NET WEIGHT - ONE ASSY.					19.4	kg.

TOTAL APPROX. NET WEIGHT - THIS DRAWING 51.4 kg.

TOTAL APPROX. NET WEIGHT - 540 ASSY'S 27756 Kg



DETAIL POS. 7

SCALE 1:5 F2-100,107

REFERENCE DRAWINGS:

F2-100 REFORMER TUBE ASSEMBLY


F2-107 REFORMER TUBE LOWER BELOWS ASSY.

NOTES:

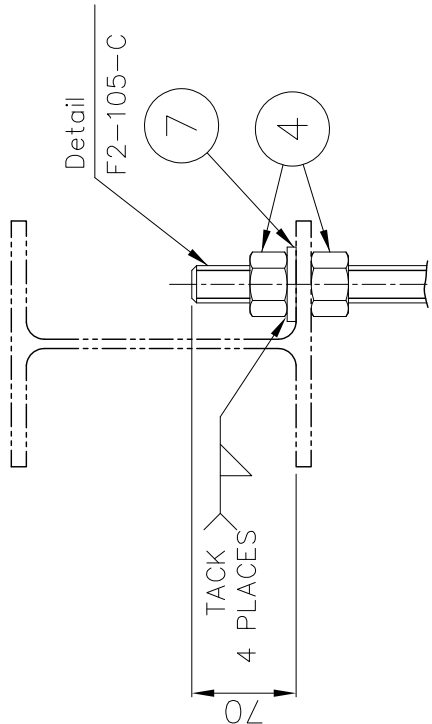
1. ALL SURFACES TO BE WELDED SHALL BE CLEAN AND FREE FROM MILL SCALE, FLAKE RUST, PAINT OR PITTING.
2. ALL WELDS TO BE GAS TIGHT, CONTINUOUS, AND DEVELOP FULL STRENGTH OF CONNECTING MEMBERS, UNLESS OTHERWISE SPECIFIED.
3. ALL EDGES TO BE BROKEN UNLESS OTHERWISE SPECIFIED.
4. DELETED
5. DELETED
6. ALL EXPOSED CARBON STEEL SHALL BE PREPARED, PRIME COATED AND PAINTED PER PROJECT SPEC.

Z	Jun. 2013	AS BUILT	F.K.A. Co.	F.K.A. Co.	F.K.A. Co.
2	Oct. 2014	ISSUED FOR CONSTRUCTION	AFRIDI	FAHPOUR	PASTEGAR
1	Jan. 2015	ISSUED FOR CONSTRUCTION	MUSAMMAD	M.A. HYAT	
REV.	DATE	DESCRIPTION	PURPOSE	CHECK	APPROVE


 شرکت توسعه آه و فولاد گل گهر
 G.I.S.D.I.Co.
 Contractor

Client's Project	Project Code	Main Contractor	Area Code	Plant Group	Equipment Code	Document Type	Eng. Discipline	Serial No.
GSD	7-2	119	1008	7	RM	04	M	105
<p align="center">REFORMER TUBE ACCESSORIES DETAILS AND SECTIONS (SHEET 2/2)</p>								
SIGNATURE		DATE		designations:				
DESIGNED	MATE	Jun. 2014						
PREPARED	MUSAWI	Jun. 2014		drawing-No.				
CHECKED	ABED	Jun. 2014		repl. for:				
APPROVED	M.A.HAYAL	Jun. 2014		14		15		16
13								
			<p align="center">KGMMMR27F2105</p>			<p align="center">repl. by : A2 CONT. & REQS. NO 92/5499</p>		
			<p align="center">SCALES: 1:5 REV. : Z</p>			<p align="center">SHEET: A2 1/1</p>		
								

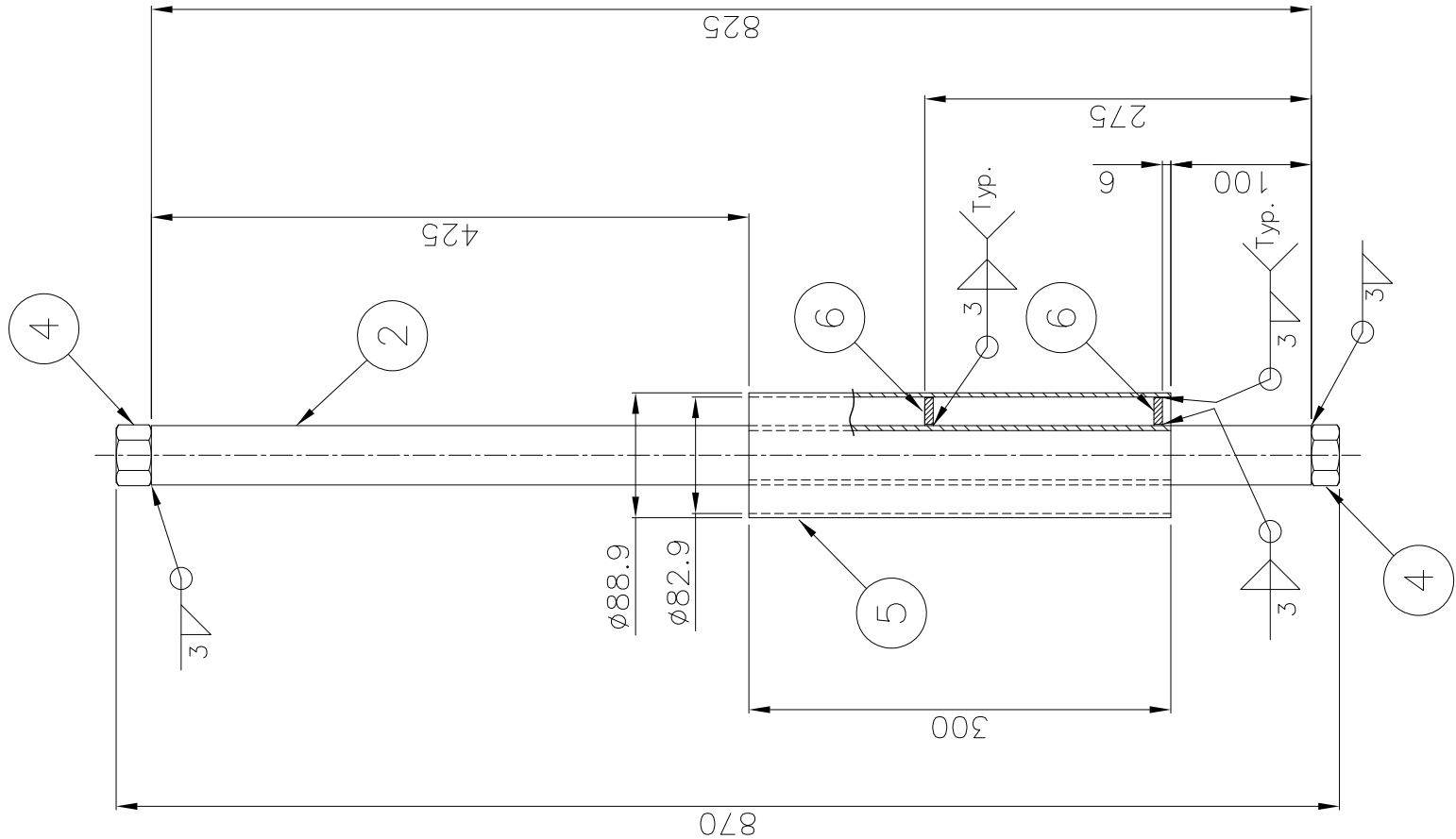
Confidential: This document discloses proprietary information. It may not be reproduced nor disclosed any person, nor used for any purpose, except with the written permission of MMTE, C.



DETAIL F2-105-D

SCALE 1:5 F2-100,107

TUBE SUP'T ROD MOUNT

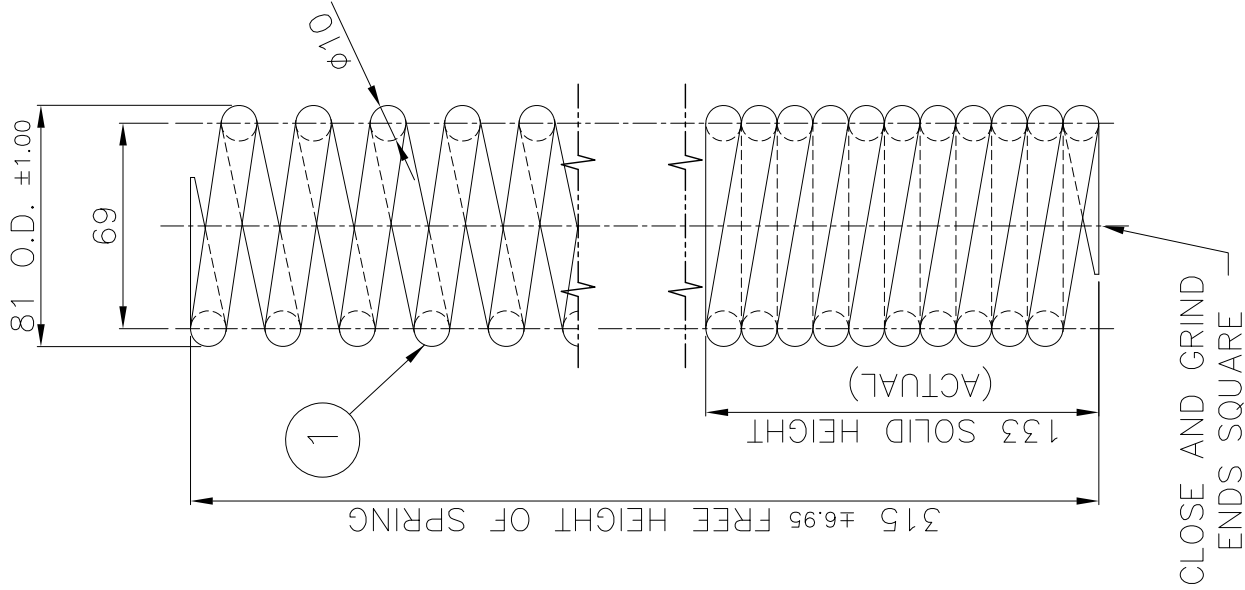


DETAIL F2-105-B

SCALE 1:5 F2-100,107

SPRING ADJUSTING BRACKET

TUBE SUP'T SPRING



CLOSE AND GRIND
ENDS SQUARE

DETAIL F2-105-A

SCALE 1:5 F2-100

UNLESS OTHERWISE SPECIFIED		
	SURFACE FINISH DIN 3141	RANGE 2
	3RD ANGLE PROJECTION	
TOLERANCES & FITS: MACHINED SURFACES DIN 7188,"MED" WELDED CONSTRUCTION ACC. TO "AWS"		
BREAK ALL MACHINED SHARP EDGES BY 1x45°		ALL DIM IN MILLIMETER

Confidential: This document discloses proprietary information. It may not be reproduced nor disclosed any person, nor used for any purpose, except with the written permission of MMTE, C.