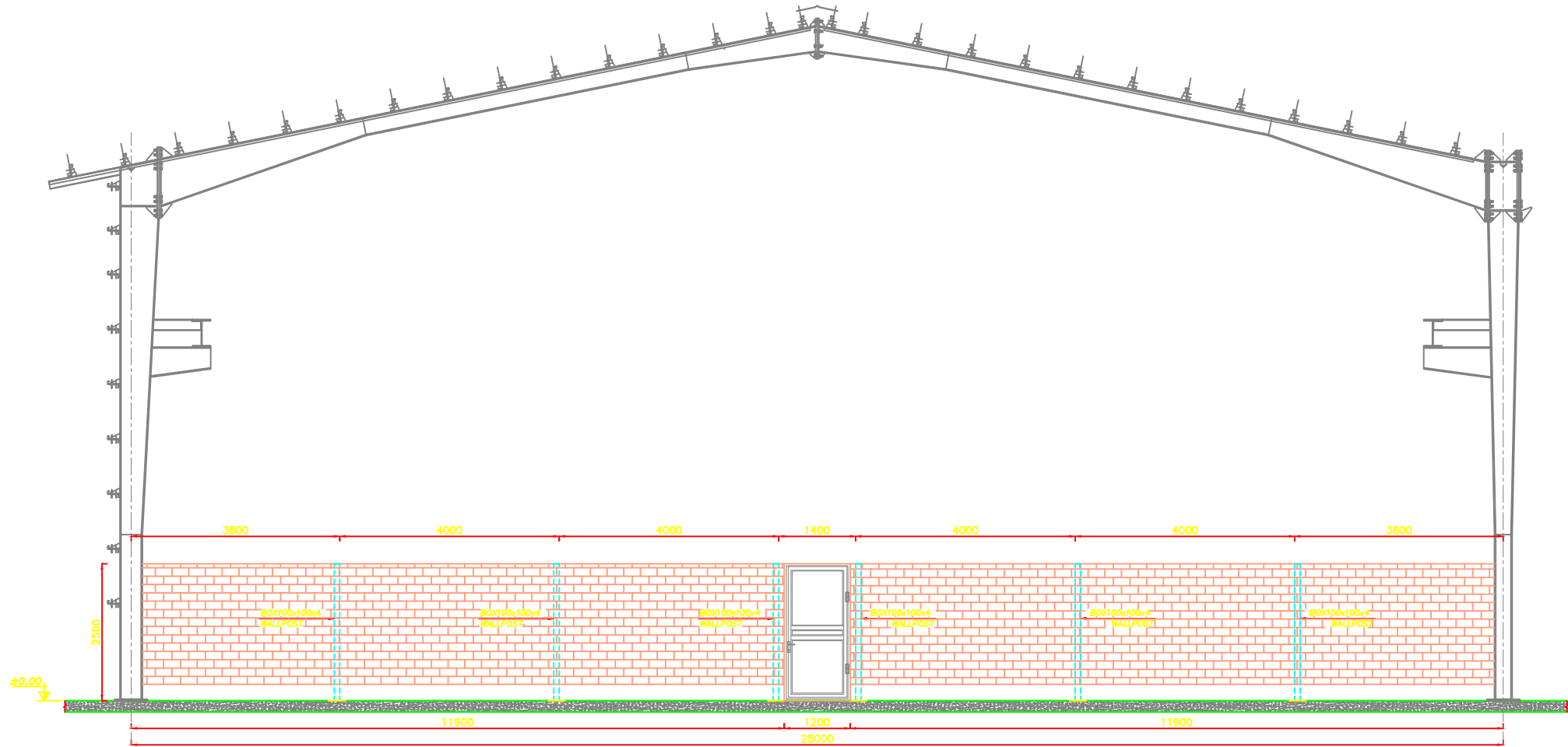
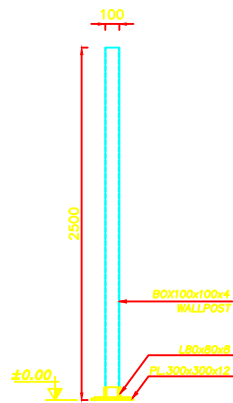


THIS PRINT AND ALL THE INFORMATION HEREON IS THE PROPERTY OF BARSOO MUST NOT BE MADE PUBLIC, COPIED OR USED IN ANY WAY DETRIMENTAL TO OUR INTEREST. IT IS LOANED SUBJECT TO RETURN ON DEMAND, UNLESS FURNISHED UNDER CONTRACT.



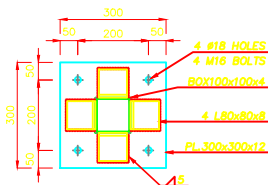
FRAMING PLAN

SC.1:20



WALLPOST PLAN

SC.1:20



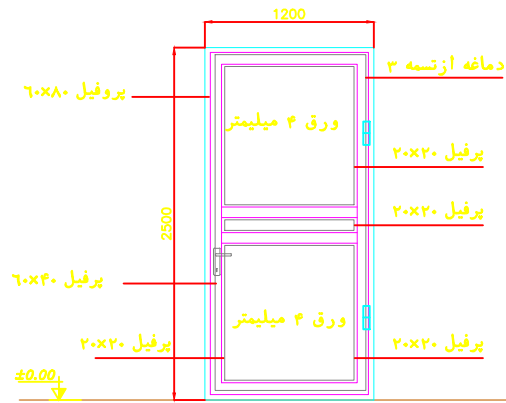
BASE PLATE

SC.1:10



ANCHOR BOLT M16

SC.1:10



M.D.

T-01

SC.1:20

REFERENCES

NOTE

Rev.	Date	Revisions description	Prepared	Checked	Approved
00	23 DEC 2024	FIRST ISSUED	J.MALEKIAN	A.KOSARIKH	A.MOHAMMAD

Client	شرکت توسعه آهن و فولاد گل محمدی Golgohar Iron & Steel Development Co. G.I.S.D.Co.	Consultant	
Project Name	Golgohar Steel Project	Family code/Machine code	
Title	WAREHOUSE FRAMING PLAN & DETAILS	Weight (Kg)	J (Kg/m <sup>3</sup> )
Client DWG Number	—	Revision	—
BARSOO DWG Number	157DCSG0525101	Revision	00
		Format	A1
		Nr. of sheets	—
		Sheet	Follow